

Comparison: ER/Studio Editions

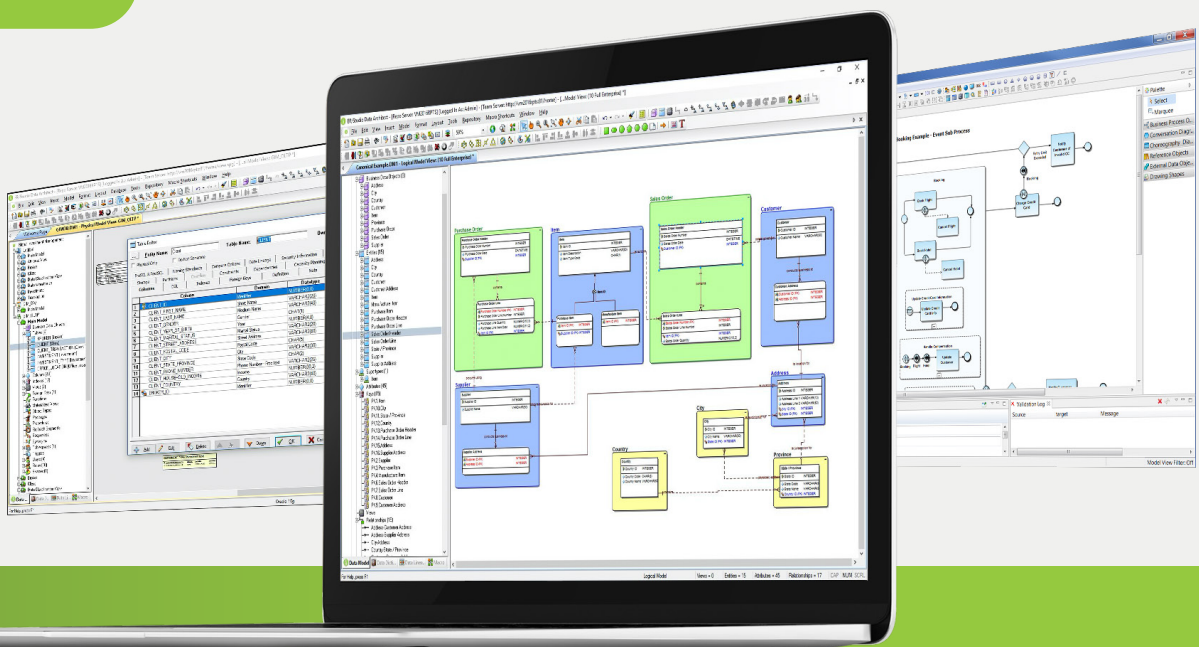
ER/Studio is widely regarded as the foremost option for managing enterprise data architecture. That is because of its impressive array of features such as data modeling, metadata management, data governance, adherence to standards and best practices, scalability, flexibility, and facilitation of effective collaboration and teamwork.

This comparison outlines the different editions of ER/Studio and their features.

- ER/Studio Data Architect is the desktop tool for data modeling that includes all of the features you need to create and manage data models.
- ER/Studio Data Architect Professional also includes ER/Studio Repository which is the storage database for data model and metadata.
- ER/Studio Enterprise Team Edition includes all of the above components (that is, ER/Studio Data Architect, ER/Studio Team Server Repository, ER/Studio Business Architect, ER/Studio Team Server Core, and MetalIntegration Technology's bridges).
- ER/Studio Team Server Core is the collaboration platform for data models, metadata, and data governance. ER/Studio Team Server Core is a separate purchase and can only be added with ER/Studio Enterprise Team Edition.
- ER/Studio Business Architect is the desktop tool for business process and conceptual modeling.
- For full metadata and data lineage import and export, add MetalIntegration Technology's bridges to ER/Studio Data Architect and ER/Studio Data Architect Professional.

For more information, please contact the Sales team:

CONTACT SALES



	Data Architect	Data Architect Professional	Business Architect	Enterprise Team Edition
DESKTOP DATA MODELING TOOL (DATA ARCHITECT)				
Conceptual data modeling (basic)	●	●		●
Logical data modeling	●	●		●
Physical data modeling	●	●		●
Relational or dimensional data modeling	●	●		●
Hierarchical data modeling (JSON, BigQuery, MongoDB)	●	●		●
Data flow modeling (data lineage and ETL modeling)	●	●		●
Forward engineering (design new database)	●	●		●
Reverse engineering (from existing database)	●	●		●
Compare and merge	●	●		●
Data dictionaries	●	●		●
Automation	●	●		●
Data model import	●	●		●
Data model export	●	●		●
Data dictionary import	●	●		●
Limited metadata import (MetalIntegration Technology's MetaWizard bridges)	●	●		●
Integrate with ERP and CRM metadata import (Silwood's Safyr)	●	●		●

DATA MODEL & METADATA STORAGE DB (REPOSITORY)				
Data model sharing		●		●
Data dictionaries sharing		●		●
Objects sharing		●		●
Object comment sharing		●		●
Repository projects		●		●
Change management or version control (with branching and merging)		●		●
Universal mappings		●		●
Business term mappings		●		●
Integrate with issue tracking and project tracking (Atlassian's Jira)		●		●

	Data Architect	Data Architect Professional	Business Architect	Enterprise Team Edition
DATA MODEL, METADATA, AND DATA GOVERNANCE COLLABORATION PLATFORM (TEAM SERVER CORE)				
Data model and metadata publication				●
Glossaries				●
Terms				●
Entity-relationship object				●
Data sources				●
Data catalogs				●
Report sharing (business reports and technical reports)				●
Activity notifications				●
Change management				●
Business term harvesting				●
Graphical visualization of relationships				●
Integrate with data warehouse automation (Idera, Inc.'s WhereScape)				●
Integrate with data governance (Collibra)				●
DESKTOP BUSINESS PROCESS AND CONCEPTUAL MODELING TOOL (ER/STUDIO BUSINESS ARCHITECT)				
Business process modeling			●	●
Conceptual modeling			●	●
Impact analysis diagram			●	●
Impact analysis report and web report			●	●
Conceptual model import from Data Architect's logical models			●	●
Conceptual model update from Data Architect's logical models			●	●
Conceptual model export to Data Architect's logical models			●	●
Data import			●	●
Microsoft Visio diagram import			●	●
Diagram export			●	●
Grid editor data export			●	●
Grid editor data import			●	●
Workspace export and import			●	●
DATA MODEL, METADATA, AND DATA GOVERNANCE COLLABORATION PLATFORM (TEAM SERVER CORE)				
Full metadata import*	Add-on	Add-on		●
Metadata export*	Add-on	Add-on		●
Data lineage import*	Add-on	Add-on		●
* (MetalIntegration Technology's Data Lineage bridges)				